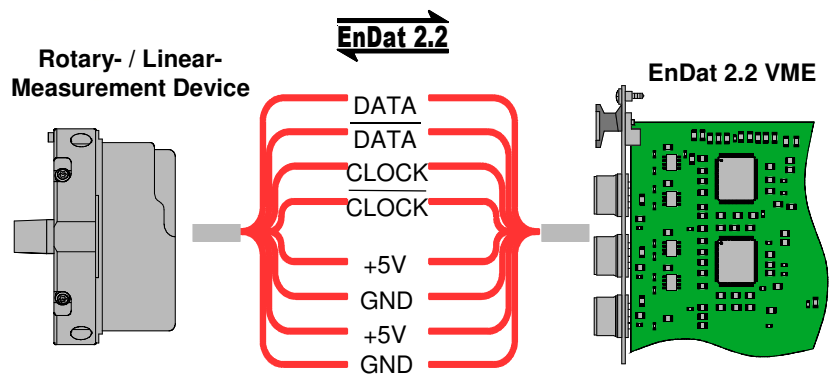
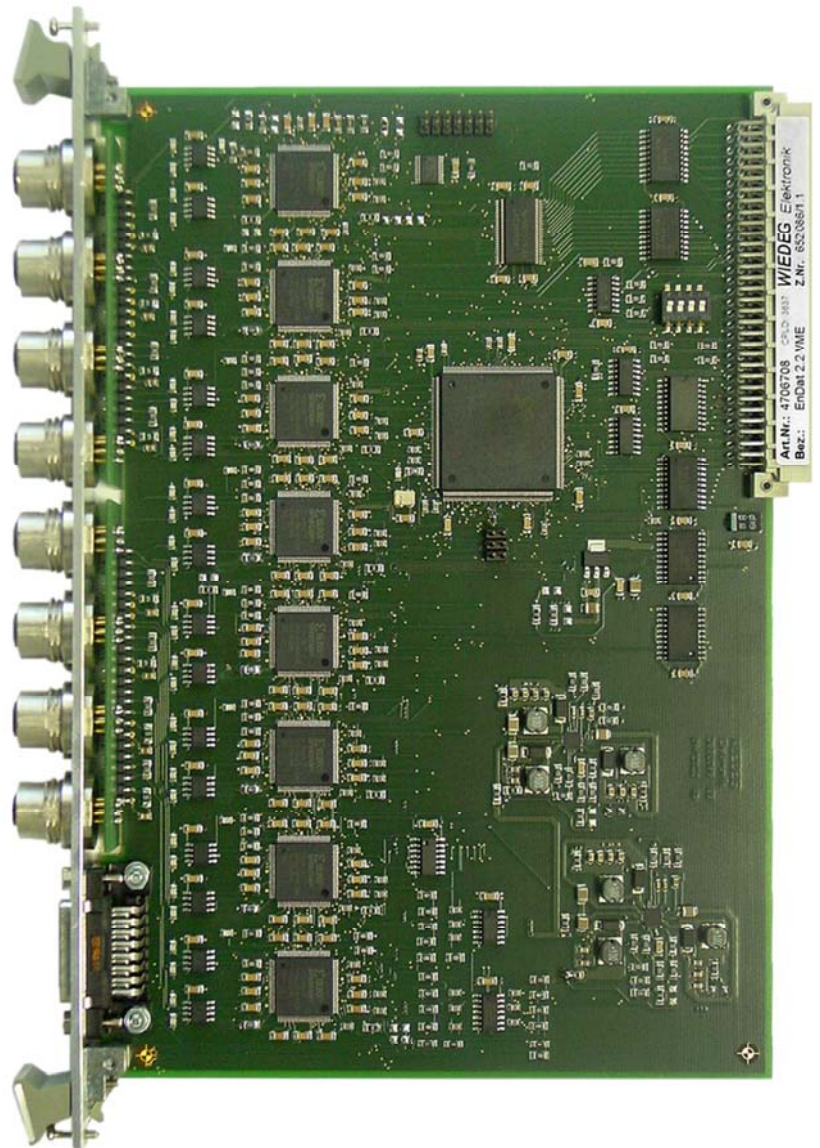


## EnDat 2.2 VME – Analysis Board for Rotary- and Linear-Measurement Devices with EnDat 2.2 Interface

Board for ambitious analysis of positions and velocities with EnDat 2.2 measurement devices in VME-systems

- High resolution analysis of absolute and incremental rotary and linear encoders with EnDat 2.2 Interface
- 8 Channels with master-interface and support of the full EnDat 2.2 instruction set
- “Slimmed” version with 4 measurement channels available
- Various internal and external latch-functions, with or without interrupt generation
- Latch of position values in single channels or synchronous, exactly simultaneous, in several channels via software- and timer-latch, with possible hardware cascading of multiple boards



### WIEDEG Elektronik GmbH

Müllenbacher Str. 14, 51709 Marienheide  
Tel.: +49 2264/4577-0 Fax: +49 2264/4577-29  
www.wiedeg.de info@wiedeg.de



<http://www.wiedeg.de/en/products/vme-and-pc-modules>

